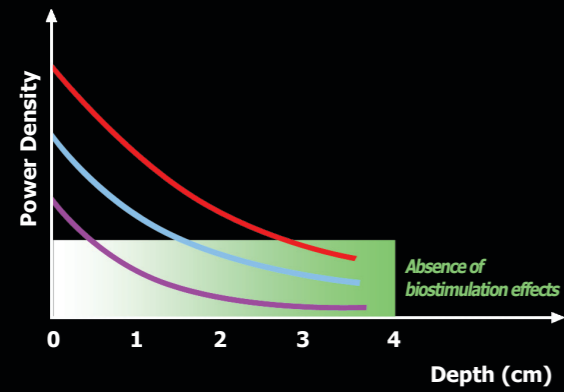
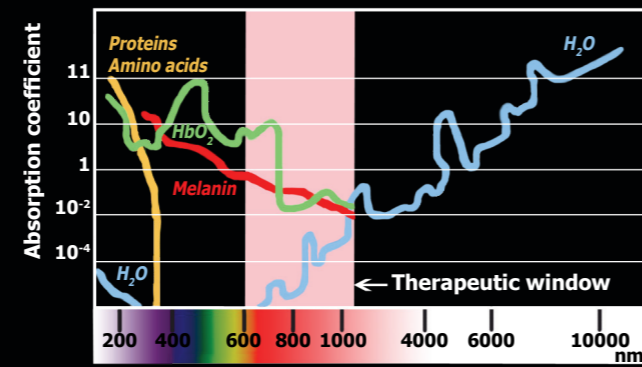


GRAPHIC ILLUSTRATION OF OPERATING PARAMETERS:

Graph showing relation between laser power density and penetration depth.



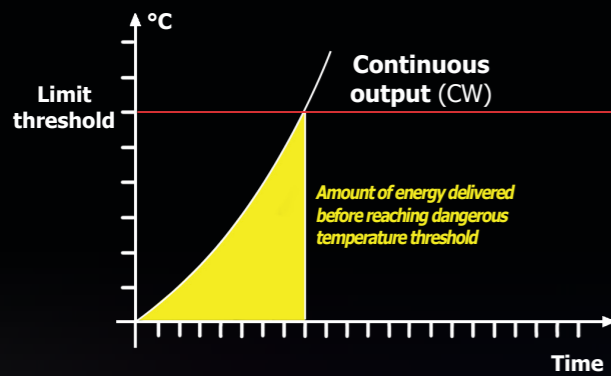
Graph showing relation between tissue Absorption Coefficient and LASER OUTPUT WAVELENGTH.



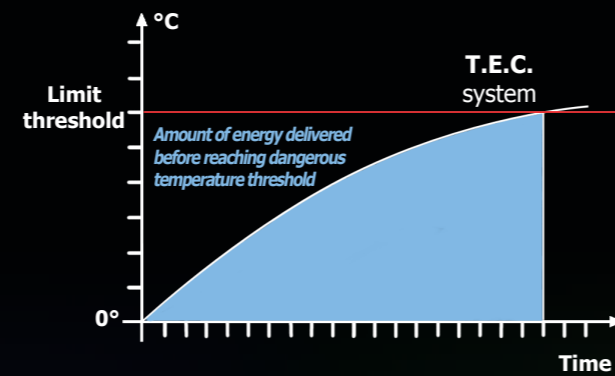
EvoLaser 1064-Rev.0



Graph showing the amount of energy absorbed over time with CONTINUOUS LASER OUTPUT before the maximum tolerable threshold is reached.



Graph showing the amount of energy absorbed over time with T.E.C. SYSTEM LASER OUTPUT before the maximum tolerable threshold is reached.



EvoLASER 1064

High Power

ULTIMATE TECHNOLOGICAL DEVELOPMENT...THE LIGHT THAT REMOVES PAIN

- **MAXIMUM EXPANSION** OF OUTPUT PARAMETERS
- **M.P.P.® SYSTEM:** "MULTI PARAMETER PROTOCOLS"
- **EXTENSIVE PATIENT DATABASE** WITH CUSTOMISED PROGRAMS
- **HIGH-RESOLUTION COLOUR TOUCH SCREEN** OPERATION
- TREATMENT PROGRAMS FOR **TRIGGER POINTS** AND **LARGE BODY AREAS**
- **QUICKSTART** FEATURE FOR THE VERY FAST ACCESS TO THE **TREATMENT AREA**
- **EASY TRANSPORT**



AC International s.r.l.

Via della Canapa 22, 44042 Cento (FE), Italy, Tel: +39 051 6836385 -
 Fax: +39 051 6831061, Website: www.cosmogamma.com, contact:
export@emildue.com

EVOLASER 1064

(EVO.1064) HIGH-POWER LASER THERAPY



Evolaser 1064 is the state of the art laser therapy machine. It allows a variety of therapeutic applications, making it the most versatile laser device on the market:

- high output power;
- continuous and pulsed mode up to 10.000 Hz;
- duty cycle range from 20% to 80%;
- possibility to create complex programs by combining the point-to-point, scanning methods and cone application;
- adjustment of sweep frequency and duty cycle;
- use of cone for treatment of large areas;
- BURST mode emission;
- Test of the power actually released.

The Evolaser 1064 incorporates a computer that provides almost infinite programming capabilities and allows the operator to enter the patient's data including information on the history and evolution of patient's disease.

A convenient USB connection allows transfer of patient's data to an external database, as well as software updating.

An extensive program library based on the **M.P.P.® System (Multi Parameters Protocols)** allows a variety of treatment protocols to be developed for the different pathologies. Thanks to an innovative system, the device automatically adjusts the output parameters according to the patient's phototype and age and to the treatment area (in cm²), thereby providing the best treatment for the patient's condition.

From sports injuries to chronic diseases and disorders requiring rehabilitation, the Evolaser 1064 offers the ultimate in laser output technology and, with its wide range of pre-set protocols, provides highly effective results in biostimulation and in the treatment of pain.

The unique patented **S.P.S.® System (Scanner Point Scanner)** delivers the most effective treatment possible by combining two scanning sessions with a special point-to-point modality using the **T.E.C.® System**.

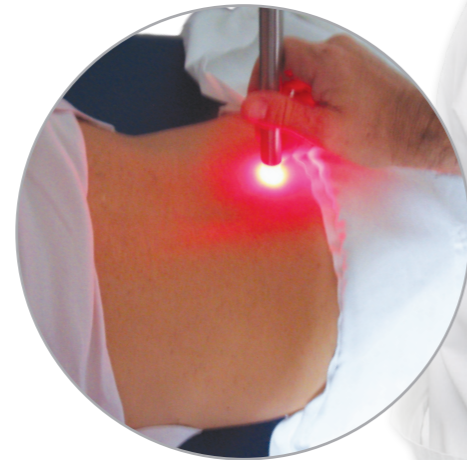
With its innovative and patented **T.E.C.® System (Total Emission Control System)**, the Evolaser 1064 provides unequalled parameter flexibility, allowing ultra high power density to be delivered without overheating tissues.

The power actually released at the laser handpiece can be verified through the system of integrated reading on the device. Similarly, it is possible to verify the efficiency and integrity of the optical fiber.

The use of US-made latest-generation laser modules, combined with ultra-high efficiency (ultra-low attenuation) optical fiber suitable to transport several hundreds Watts, ensures the Evolaser 1064 unit emits a high-quality, ultra-pure laser beam. Thanks to this excellent quality, the laser beam can penetrate at more than 10 cm depth.

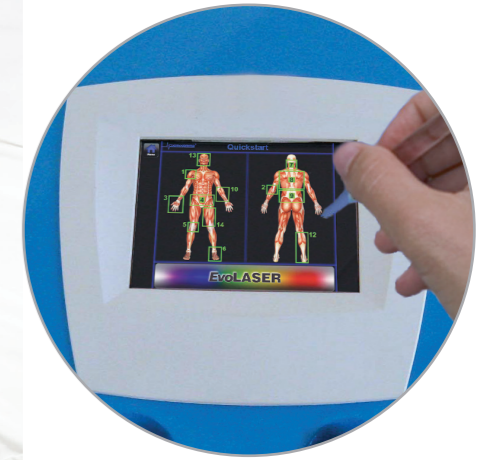
The Evolaser 1064 has a unique, sophisticated design that ensures maximum functionality for a variety of therapeutic applications.

A stainless steel hand-piece with a Teflon tip allows accurate execution of "Trigger Point" and "Manual scan" techniques for best therapeutic results.



The use of cone-shaped beam expanders applied to a mechanical arm allows larger areas to be treated without the aid of the therapist.

A 5.7" high-resolution colour touch screen allows operator to choose from a variety of treatment protocols and programs.



TECHNICAL DATA

Laser source:	GaAlAs laser diodes
Wavelength:	1064 nm
Guide light:	Laser 635 nm (±3%), < 3 mW
Operation:	Continuous (CW), pulsed, hyper-pulsed, M.P.P. (Multi Parameter Protocol)
Fibre output power:	13 W (CW)
Target indicator:	3 mW red laser pointer
IR spot size:	1.70 cm ² at 1 cm distance from patient's skin; 30 cm ² of cone used
Time:	digital indication of actual treatment time
Power supply:	110 V~ - 230 V~ / 50 Hz - 60 Hz
Power consumption:	145 VA
Weight:	4.7 Kg
Dimensions (LxWxH):	27 x 44 x 23 cm
Class:	4 (CEI EN 60825-1)
Safety class:	I type BF

INCLUDED ACCESSORIES

2 pcs. - Protective eyewear [1]	(TOP)
1 pc. - Power cable	(C/A)
1 pc. - Footswitch [2]	(D02.00605)
1 pc. - Compressed air spray [3]	(B02.00041)

OPTIONAL

• Cone for treatment of 30 cm ² areas [4]	(A01.00102)
• Cone support arm [5]	(A01.00098)
• Evoline trolley [6]	(A01.00072)
• Arm holder [7]	(A01.00099)
• Bag for Evolaser [8]	(A01.00101)

